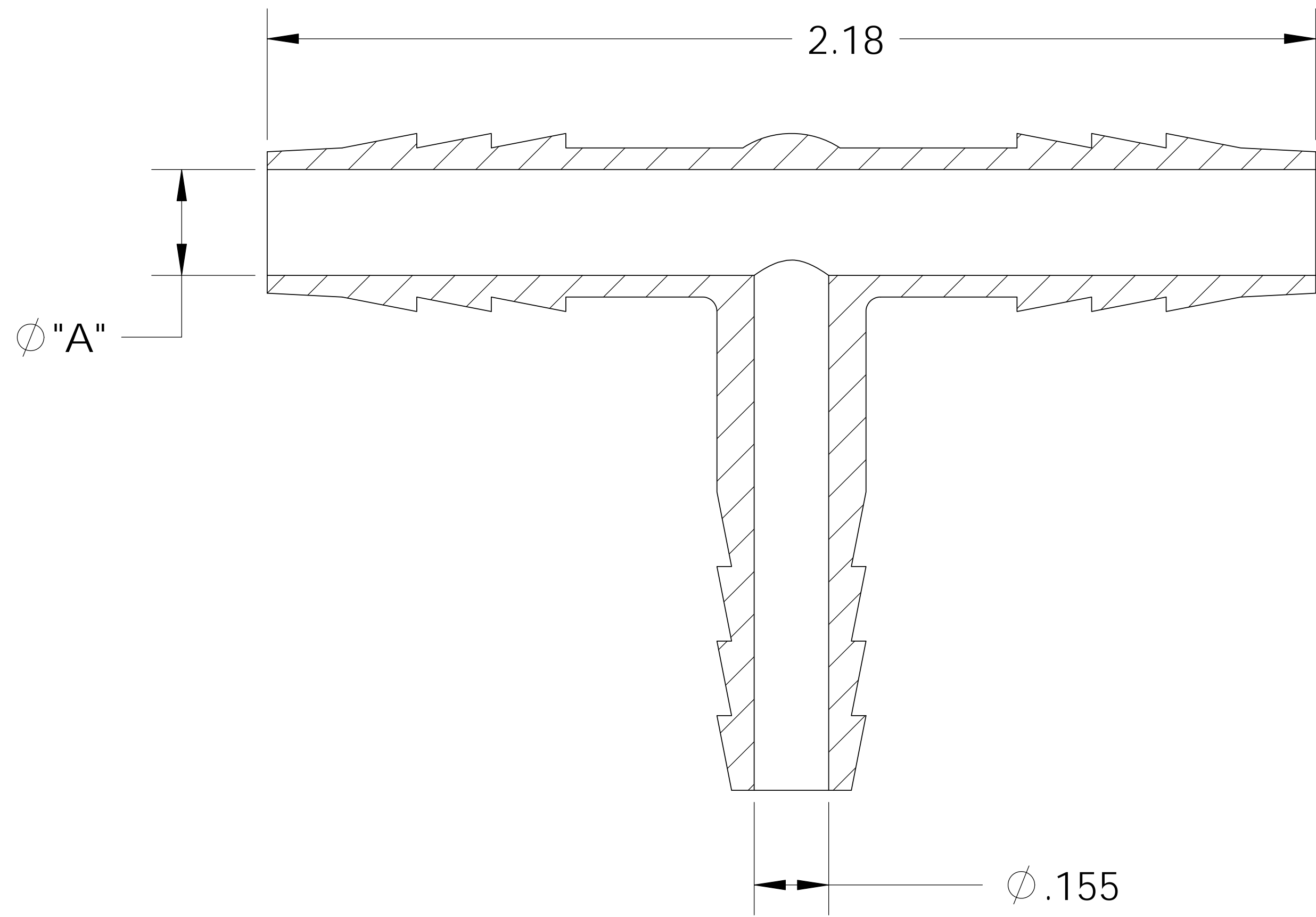
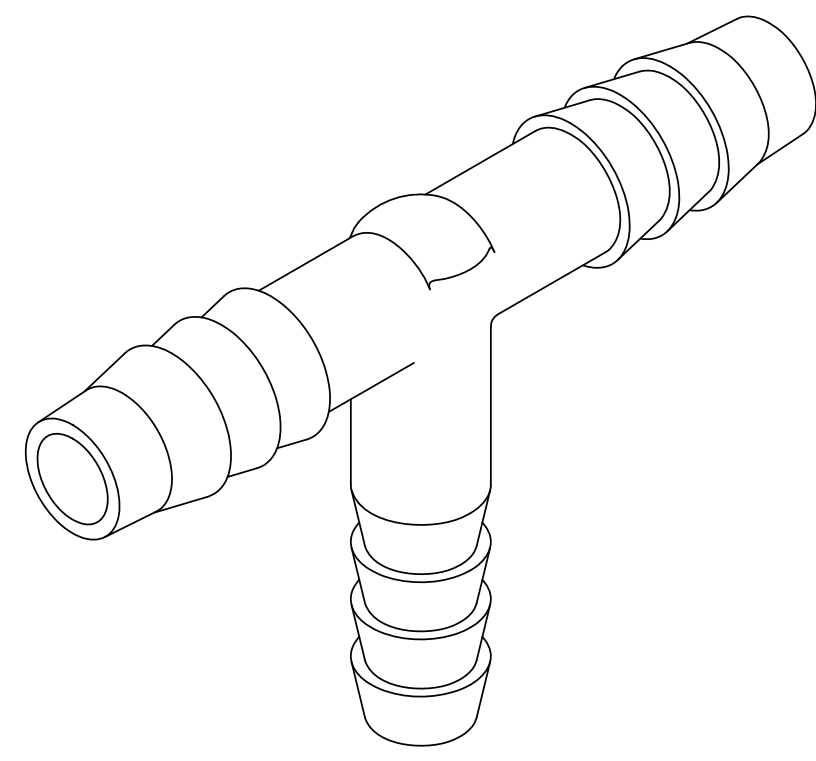
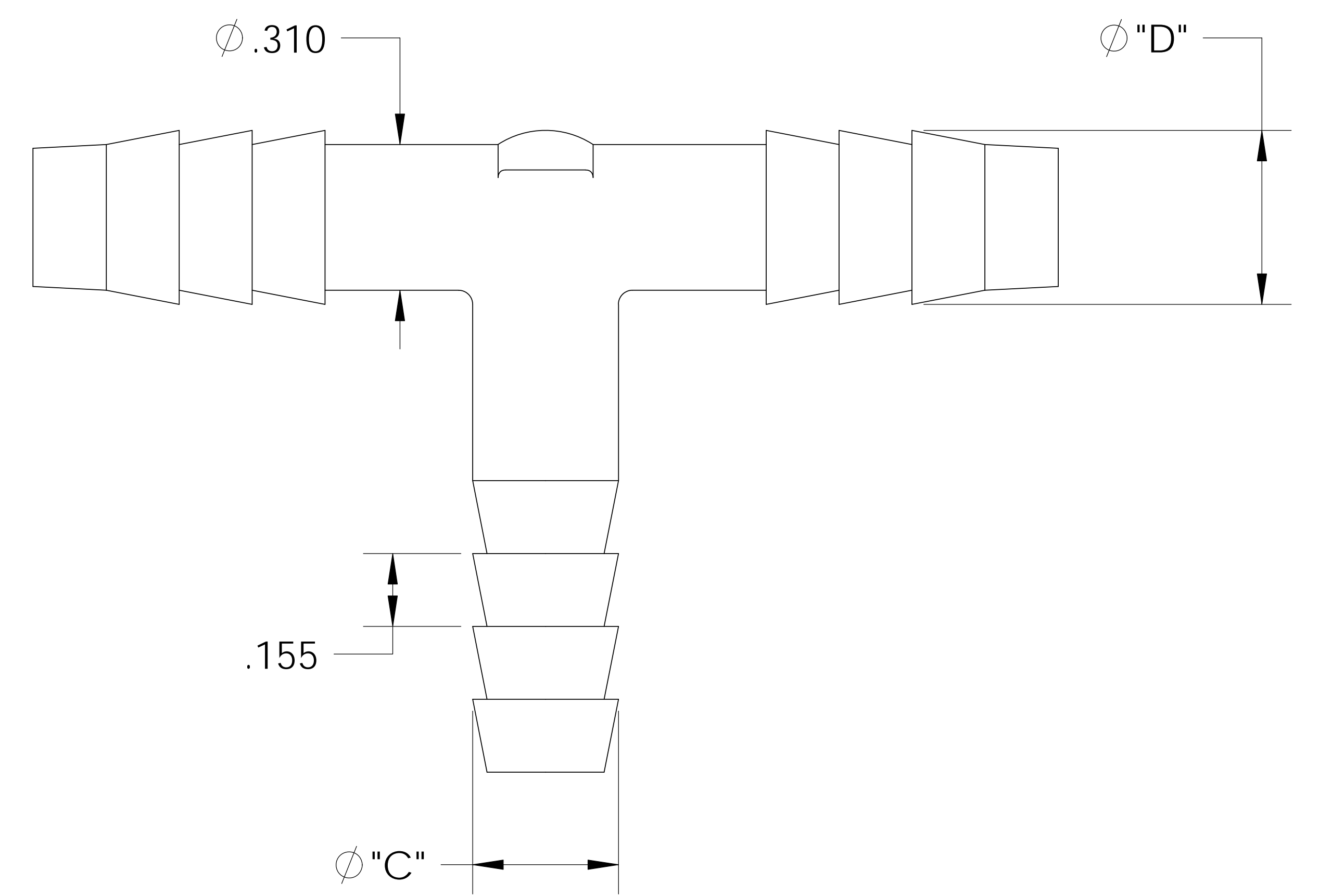
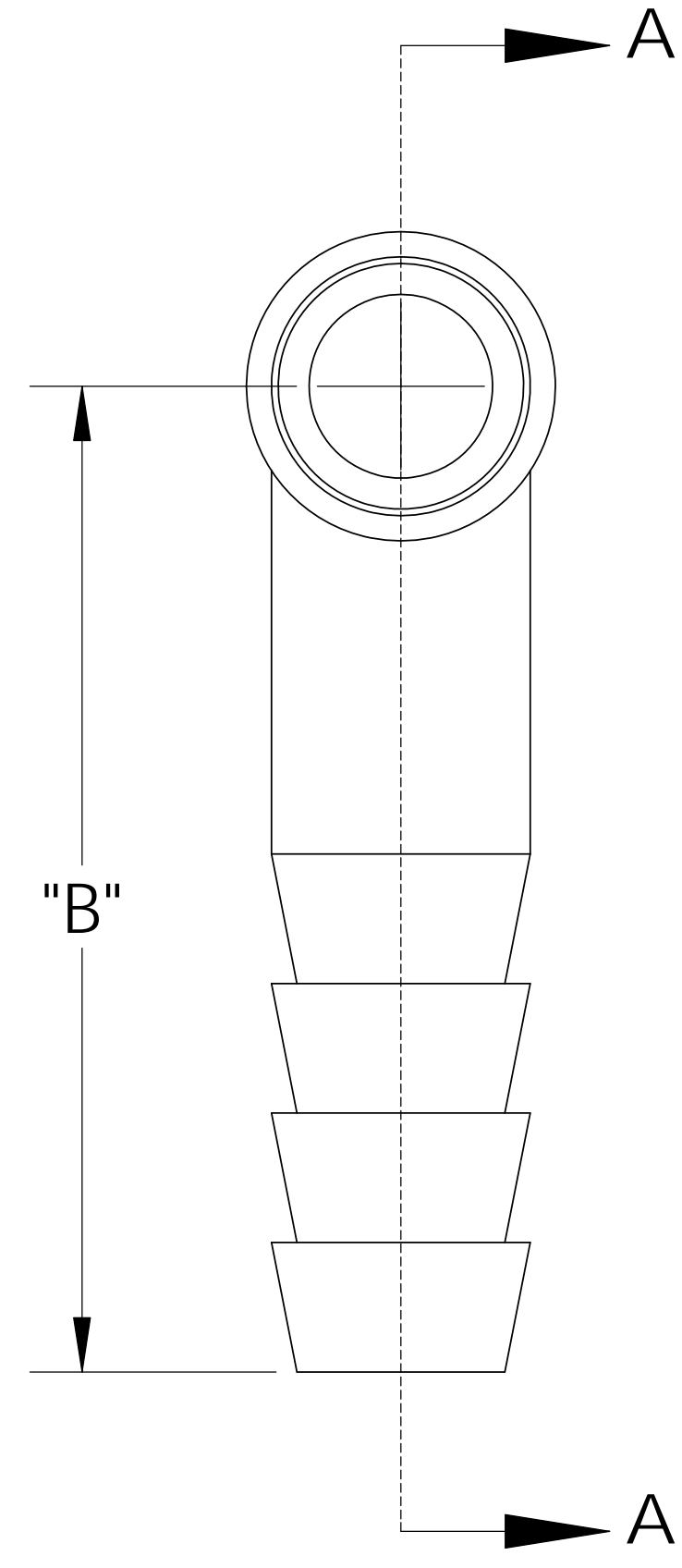


UNCONTROLLED IF PRINTED; CONTROLLED DOCUMENT LOCATED IN IQMS DOCUMENT CONTROL



SECTION A-A



CATALOG NO.	DESCRIPTION	MATERIAL	DIM "A"	DIM "B"	DIM "C"	DIM "D"
TT9455/P	1/4 X 5/16 X 5/16 P	POLYETHYLENE	.215	1.14	.305	.360
TT9455/N	1/4 X 5/16 X 5/16 N	NYLON	.220	1.18	.360	.370

SHOWN

REV	WRO#	DESCRIPTION
C	95.00053	CONVERTED TO 3D FORMAT

UNLESS OTHERWISE SPECIFIED:  
 DIMENSIONS ARE IN INCHES  
 TOLERANCES:  
 ANGULAR:  $\pm 0.5^\circ$   
 X.X =  $\pm 0.1$   
 X.XX =  $\pm 0.05$   
 X.XXX =  $\pm 0.015$   
 REMOVE ALL SHARP EDGES  
 AND BURRS  
 BLEND ALL RADII TO 0.01IN  
 INTERPRET GEOMETRIC  
 TOLERANCING PER: ANSI Y 14.5 1994

	NAME	DATE
DRAWN	KDJ	12/17/10
CHECKED	KDJ	12/17/10
ENG APPR.		XX/XX/XX
MFG APPR.		XX/XX/XX
Q.A.		XX/XX/XX

**Thogus** You think it, we can make it...  
 33490 PIN OAK, AVON LAKE, OH 44012  
 TITLE: 1/4 BARB X 5/16 BARB X 5/16 BARB TEE

**PROPRIETARY AND CONFIDENTIAL**  
 THE INFORMATION CONTAINED IN THIS DRAWING IS THE SOLE PROPERTY OF THOGUS PRODUCTS COMPANY. ANY REPRODUCTION IN PART OR AS A WHOLE WITHOUT THE WRITTEN PERMISSION OF THOGUS PRODUCTS COMPANY IS PROHIBITED.

MATERIAL: P, N  
 FINISH: NA  
 THIRD ANGLE PROJECTION:

COMMENTS:  
 DO NOT SCALE DRAWING

SIZE <b>B</b>	DWG. NO. TT9455	REV <b>C</b>
SCALE: 2:1	MASS:	SHEET 1 OF 1

REV	WRO#	DESCRIPTION
HISTORY		